

B D Karve Research and Consultancy Cell

Vision:

We at Karve Institute of Social Service envisage a society which ensures peace, harmony, dignity, justice and equal opportunities for development of individuals and communities through planned social work interventions by a committed cadre of professionals.

To contribute to the Institute's vision through extension, knowledge creation and knowledge dissemination

Mission:

Address social issues to resolve social problems, through strategic social work interventions and collaborative endeavours for sustainable social development and contribute to national development.

Objectives:

- To conduct the research in social work and social development.
- To provide consultancy services in the area of social work, social problems, community development, and urban and rural development and to the corporate sector.
- To undertake the evaluation and capacity building programme for the organizations involved in social work and social development activities as well as for the corporate sector.
- To initiate and conduct wide range of social services such as counselling rehabilitation programmes and social educational programmes.
- To collaborate, associate with the organization, association, and institutes having similar objectives to undertake social work activities. Such other projects or activities in furtherance of aims and objectives of the institute.
- To provide an opportunity to faculty and staff to enhance their skills and expertise and their skills by assigning them with the project or involve them in consultancy and other activities.

Shared Beliefs:

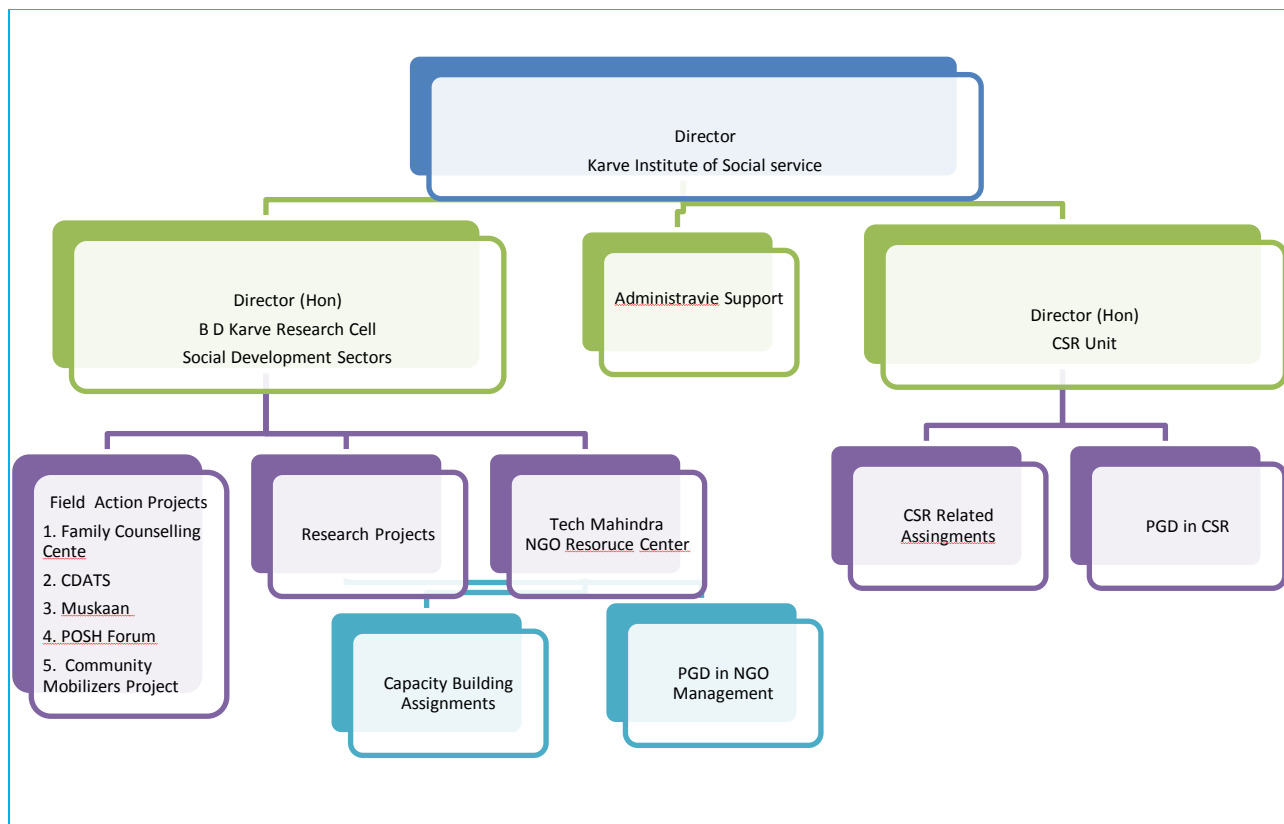
- Our professional integrity is experienced in all our thoughts, words and deeds by our stakeholders.
- Our detailed planning, budgeting and monitoring processes help us build quality, honour our commitment and response time respectively.
- We offer collective and individual space for those associated with the cell to excel. Besides, constructive feedback is offered either way, for continuous improvement.
- We are committed to offer individual and / or collective recognition.
- We believe in institutional building processes and thereby offer qualitative ambience for a learning organization, graduating to a knowledge management centre for those who desire to get into policy, advocacy study and or pursue higher standards of research in the field

History

Institute has been involved in extension work, research, consultancy and capacity building in social work and social development work almost since 1977. With the expansion of the research and training activities, the Institute started a research cell around 1992 with an appointment of coordinator for the cell.

Late B.D. Karve Research and Consultancy Cell (the R C Cell) formally was established on 10th May 2005. It works under the aegis of the Karve Institute of Social Services, which is premier school of social work affiliated to Savitribai Phule Pune University.

Organization



Contact Us

Director (Hon): Anjali Maydeo

Programme Manager: Vandana Apte

B D Karve Research and Consultancy Cell

Karve Institute of Social Service

18, Hill Side, Karve Nagar

Pune 411052

<http://www.karve-institute.org>

Email: kinssbdk.research@gmail.com

Phone: +91-20-65007553